

# THE FINE ARTS DESIGN



**BAIÃO**

international  
**GRAPHICS**  
focused on art



IGP 3020-136

NEW



IGP 3022-136

NEW



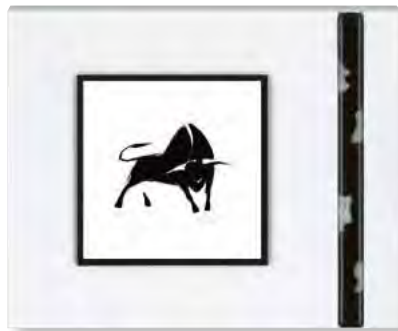
IGP 3753-136

NEW



IGP 3023-136

NEW



IGP 3021-136

NEW



IGP 3534-136

NEW



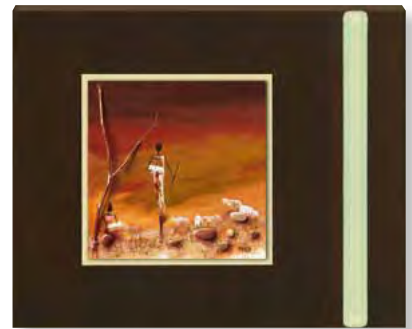
IGP 2779-136

NEW



IGP 2780-136

NEW



IGP 3834-136

NEW



IGP 2781-136

NEW



IGP 2782-136

NEW



IGP 3833-136

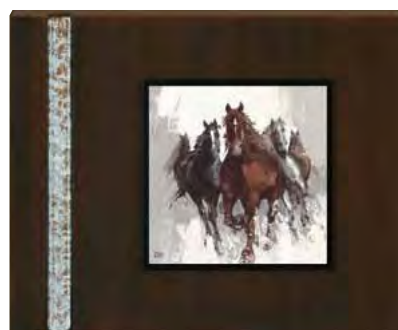
NEW



IGP 1264-136 NEW



IGP 1265-136 NEW



IGP 3289-136 NEW



IGP 2268-136 NEW



IGP 2269-136 NEW



IGP 3288-136 NEW



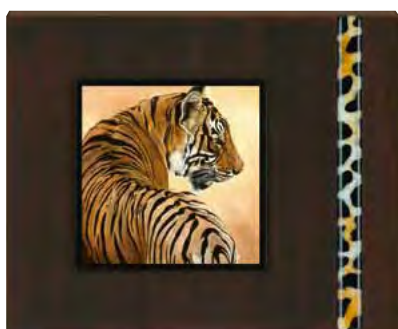
IGP 3096-136 NEW



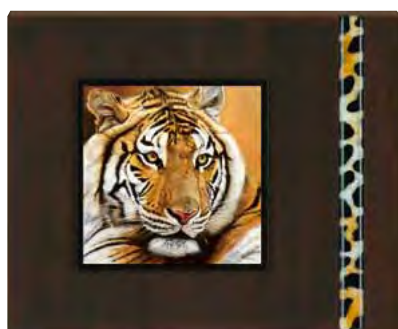
IGP 3095-136 NEW



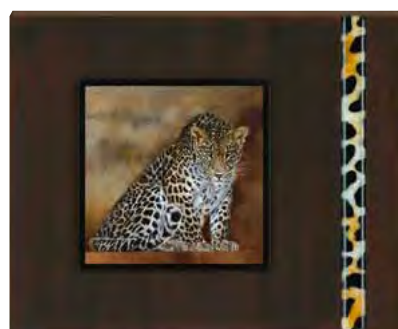
IGP 3252-136 NEW



IGP 2707-136 NEW



IGP 2708-136 NEW



IGP 3649-136 NEW



IGP 3783-136

NEW



IGP 3817-136

NEW



IGP 3819-136

NEW



IGP 3782-136

NEW



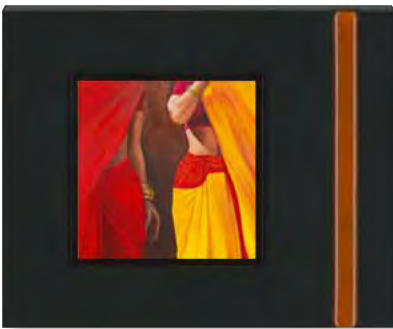
IGP 3686-136

NEW



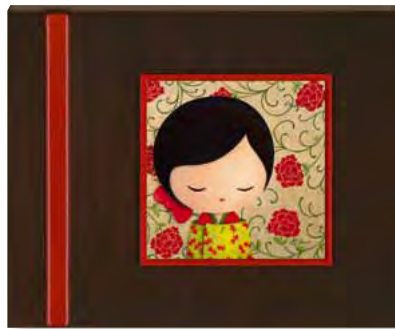
IGP 3678-136

NEW



IGP 3880-136

NEW



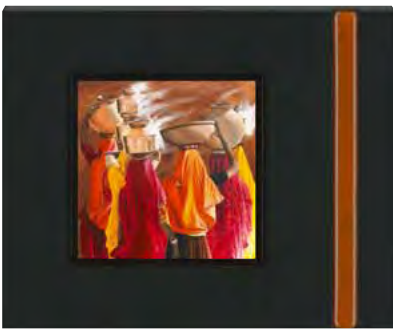
IGP 3813-136

NEW



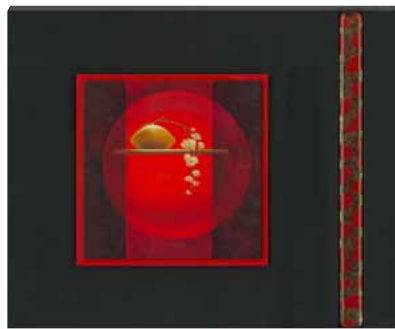
IGP 3814-136

NEW



IGP 3881-136

NEW



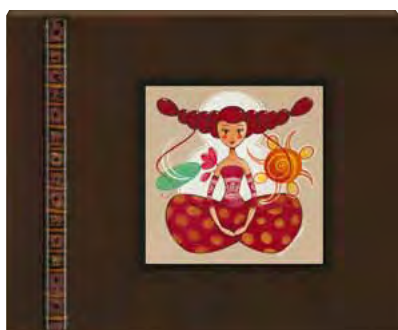
IGP 1861-136

NEW



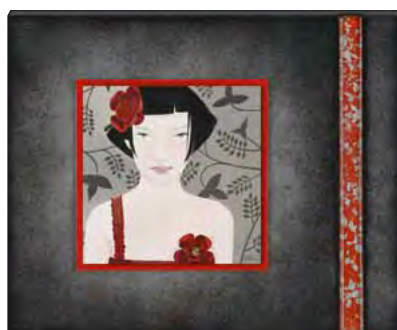
IGP 1863-136

NEW



IGP 3804-136

NEW



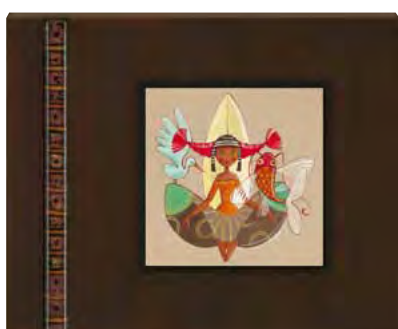
IGP 4097-136

NEW



IGP 4096-136

NEW



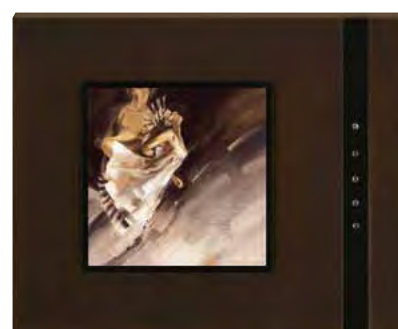
IGP 3806-136

NEW



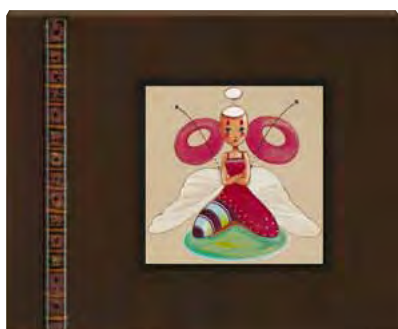
IGP 3852-137\*

NEW



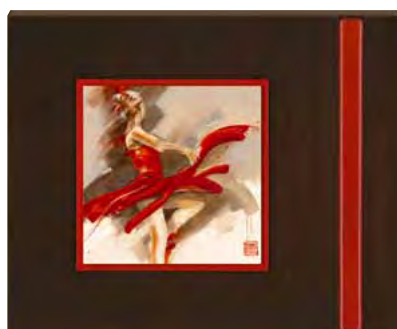
IGP 3851-137\*

NEW



IGP 3809-136

NEW



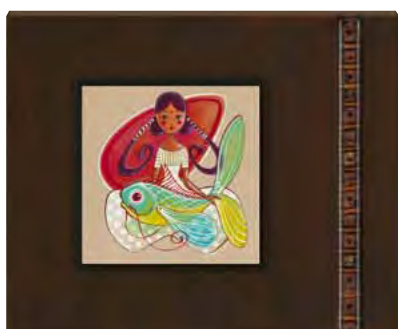
IGP 3205-136

NEW



IGP 3206-136

NEW



IGP 3805-136

NEW



IGP 2771-136

NEW



IGP 2772-136

NEW



IGP 4060-136

NEW



IGP 4061-136

NEW



IGP 3874-136

NEW



IGP 3917-136

NEW



IGP 3918-136

NEW



IGP 3875-136

NEW



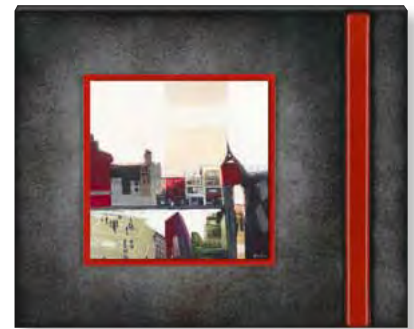
IGP 3328-136

NEW



IGP 3329-136

NEW



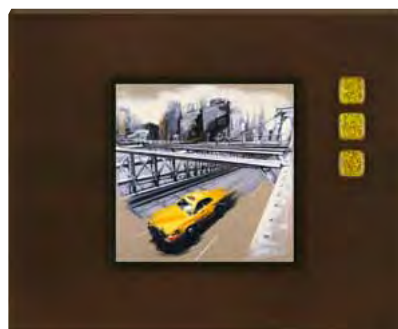
IGP 3964-136

NEW



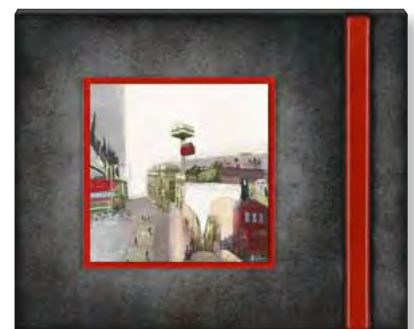
IGP 3845-136

NEW



IGP 3846-136

NEW



IGP 3965-136

NEW



IGP 3701-136

NEW



IGP 3764-136

NEW



IGP 3704-136

NEW



IGP 3703-136

NEW



IGP 4006-136

NEW



IGP 3765-136

NEW



IGP 3702-136

NEW



IGP 3812-136

NEW



IGP 3399-136

NEW



IGP 3700-136

NEW



IGP 3400-136

NEW



IGP 3839-136

NEW



IGP 3840-136

NEW



IGP 4141-136

NEW



IGP 3844-136

NEW



IGP 3966-136

NEW



IGP 4142-136

NEW



IGP 3745-136

NEW



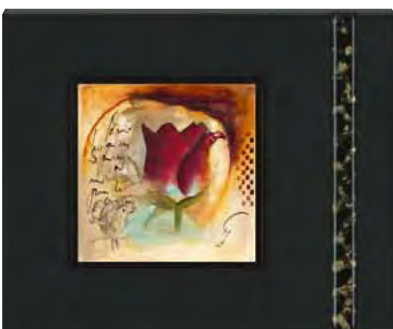
IGP 3746-136

NEW



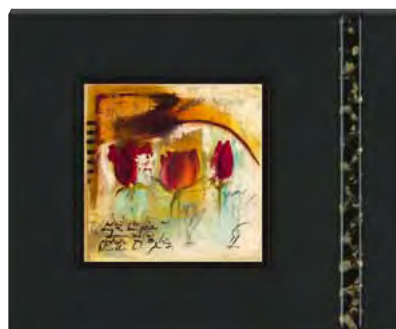
IGP 3995-136

NEW



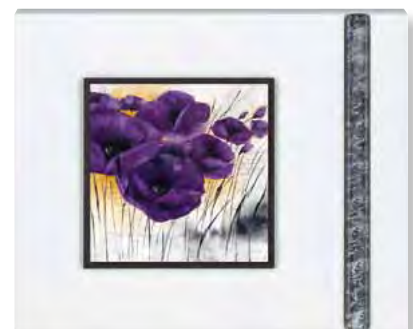
IGP 2607-136

NEW



IGP 2609-136

NEW



IGP 3996-136

NEW



IGP 3652-136

NEW



IGP 1945-136

NEW



IGP 1946-136

NEW



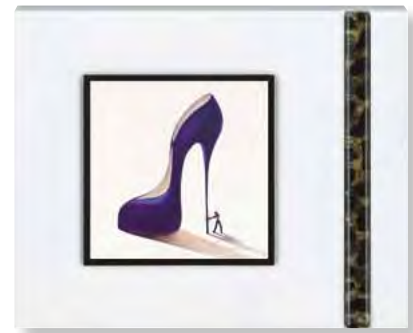
IGP 3653-136

NEW



IGP 1943-136

NEW



IGP 3211-136

NEW



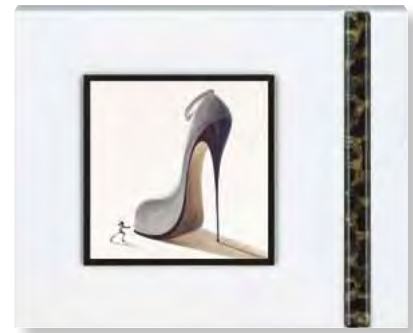
IGP 2175-136

NEW



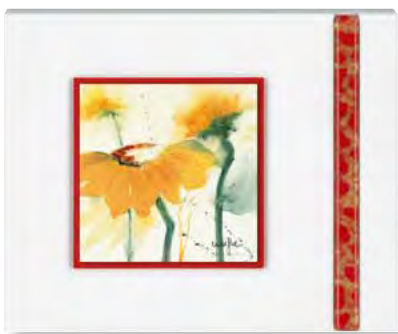
IGP 1944-136

NEW



IGP 3212-136

NEW



IGP 2176-136

NEW



IGP 3210-136

NEW



IGP 3213-136

NEW



IGP 3175-137\*

NEW



IGP 3176-137\*

NEW



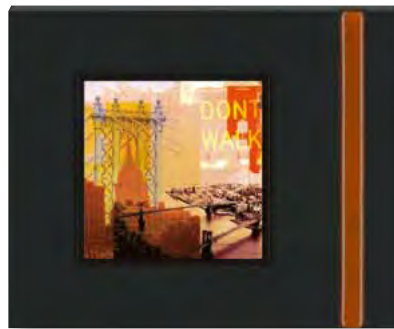
IGP 3177-137\*

NEW



IGP 3214-136

NEW



IGP 3180-136

NEW



IGP 3325-137\*

NEW



IGP 3178-136

NEW



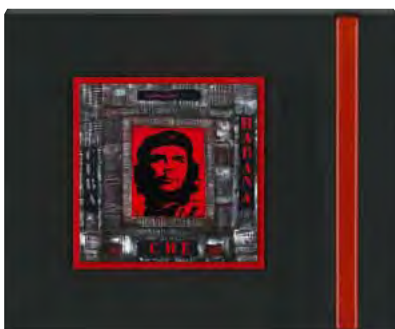
IGP 3181-136

NEW



IGP 3326-137\*

NEW



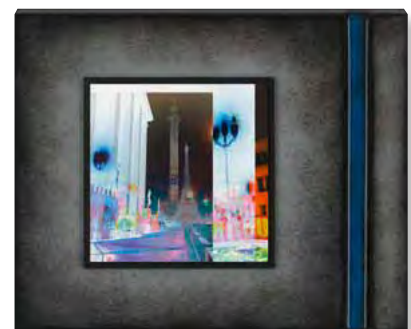
IGP 3322-136

NEW



IGP 3515-136

NEW



IGP 3516-136

NEW



IGP 3706-136

NEW



IGP 3707-136

NEW



IGP 3972-136

NEW



IGP 3828-136

NEW



IGP 3968-136

NEW



IGP 3969-136

NEW



IGP 3820-136

NEW



IGP 3971-136

NEW

**Art Glass** – das künstlerische Gestalten des Materials „Glas“ unter Verwendung verschiedener Techniken wie z.B das Miteinander-Verschmelzen verschiedener (weiße oder farbige, eventuell mit Glasschmelzfarbe bemalte) Glasstücke bei 780–900°C.

Das s.g. Fusen der Gläser lässt die kreative Möglichkeit zu, verschiedene Materialien wie etwa Metalle in das Glas einzuschließen und mit dem Glas zu verschmelzen.

Der Brennvorgang dauert, abhängig von Dicke und Durchmesser des Glases, etwa 16 bis 22 Stunden.

**Art Glass** – the artistic development of the material “glass” using various techniques such as the melting-together of different pieces of glass at temperatures of 780–900 degrees°C (white or coloured, possibly also painted with glass enamel paint.)

This so-called fusion process allows various materials such as metals to be creatively included in the glass and then melted into it.

The firing process takes 16 to 22 hours, depending on the thickness and diameter of the glass.

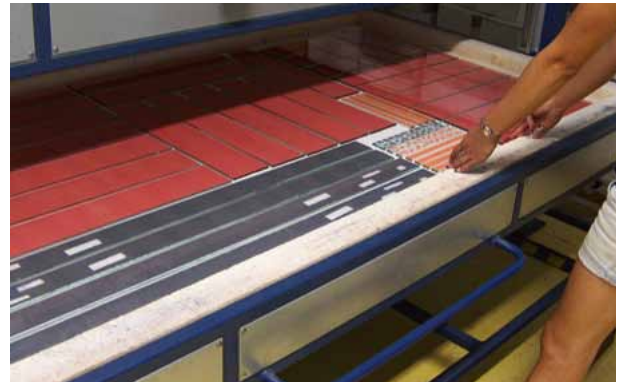
**Art Glass** – le développement artistique du « verre ». Diverses techniques sont utilisées telles que la fusion des morceaux de verre à 780–900 ° C (blanc ou en couleur, le verre peut-être peint avec de la peinture en émail de verre).

Le « verre fusing » permet d’inclure, de manière créative, divers matériaux tels que les métaux qui se fondent totalement dans le verre.

Le processus de gravure prend, selon l’épaisseur et le diamètre du verre, de 16 à 22 heures.



Bemalen der Glasstäbe per Hand passend zum Motiv.  
Painting the glass rods by hand to match the image.  
Peindre les baguettes de verre à la main en fonction du visuel.



Bemalte oder mit Metall gemischte Glasstäbe vor dem Brennen.  
Glass rods, painted or metal-mixed before firing.  
Baguettes de verre peintes ou en métal avant la gravure.



Bemalte oder mit Metall gemischte Glasstäbe nach dem Brennen.  
Glass rods, painted or metal-mixed after firing.  
Baguettes de verre peintes ou en métal après la gravure.



Auch die Bildplatten werden individuell von Hand passend zu den Motiven bemalt.  
The boards also are individually hand-painted to match the images.  
Les plaques MDF sont peintes individuellement à la main pour correspondre aux motifs.